



KANKAKEE

• NURSERY CO •

100th Anniversary



2025 WHOLESALE CATALOG



100th Anniversary

Dear Friends,

The five members of the fourth-generation ownership each wanted to share their thoughts on Kankakee Nursery turning 100.

"I feel honored and privileged to be part of the 4th generation carrying on our family's legacy that began 100 years ago. We are a family business but that includes everyone who works at our company. When you join the Kankakee Team, you are joining our family. I feel fortunate to have a job I love and help grow the business while doing so. I have many fond memories of growing up playing "office" at the Nursery and watching the business grow as I grew. Cheers to another 100 years!"

– Amy Curren Baker

"100 years is quite the accomplishment for anything. Some of my fondest memories are the times I was able to spend with my family. As a young kid, I spent many days at the nursery with my grandfather and father riding around on planters and digging machines, checking on irrigation and interacting with the wonderful employees. I would also sit at a desk by my mom's and help with paperwork. I've been blessed to share this with my kids as well. We've picked flowers, collected pine cones, gathered leaves for school projects and rode around on tractors and made so many more memories that I hope they will cherish as much as I will. The culture created by our grandfathers and parents is what has made this company last and thrive for so long. I am truly thankful to all the employees and customers that have played an integral part in getting us here. I am so proud of how far the company has come and excited and blessed to take the journey well past 100 years." – Steven Curren Jr.





"When I think of 100 years, gratitude is the first thing that comes to mind. Gratitude to our many employees over the years, our loyal customers who stuck with us through thick and thin, and our family who has given us this strong legacy to uphold. We wouldn't be here without every single one of them." – John Worth

"Approximately 0.5% of all companies make it to their 100th birthday. I believe we can now include ourselves in this exclusive club because of four main reasons: 1) A constant mission to produce the best plants possible. 2) Loyal employees that care deeply about the Kankakee Nursery Co. 3) Persistent family values of honesty and integrity through four generations and 4) A customer base built on deep-rooted relationships. A huge thank you to all of you who have helped us get here. We can't wait to celebrate turning 100 with you throughout 2025!" – Pete Worth

"My first fond memory of growing up in the nursery was the distinct smell of my dad's work truck as I rode around with him. I feel incredibly fortunate that I was able to work every day with my dad in a place that he dedicated his life to, and now I feel just as fortunate to dedicate my life to the same place working with my cousins every day." – Nick Worth



2025 Trade Show Schedule

MANTS

Baltimore, MD

January 8-10

Indiana Green Expo

Indianapolis, IN

January 10-12

Great Lakes Trade Expo

Grand Rapids, MI

January 21-23

Northern Green Expo

St. Paul, MN

January 21-23

InvigorateU

Bloomington, IL

January 28-29

Pro Green Expo

Denver, CO

January 28-30

South Dakota Nursery

& Landscape
Association

Conference &
Trade Show

Sioux Falls, SD

February 3-5

Iowa Nursery & Landscape

Association Shade
Tree Short Course

Ames, IA

February 19-21

iLandscape

Schaumburg, IL

February 26-28

*Then
&
Now*



We're a Proud Member of the Following Associations:



GENERAL INFORMATION

2025 Trade Show Schedule	2
Partnerships	3
Freight Costs	4
Container Sizing Regulations	5
Volume Discount Policy	5
Terms & Conditions	5
Kankakee Nursery Staff & Field Staff	6-9
Sales Staff and Territories	10-11
NEW Plants for 2025	12
Plants for Problem Sites, Hardiness Zones	13
Contact Information	Back Cover

SHADE & ORNAMENTAL TREES

Acer	14-17
Aesculus	18
Alnus	18-19
Amelanchier	19
Asimina, Betula	20
Carpinus	21
Carya, Catalpa, Celtis	22
Cercis, Cladrastis	23
Crataegus	23 & 26
Diospyros, Ginkgo	26
Gleditsia	27
Gymnocladus	27-28
Koelreuteria, Liquidambar, Liriodendron	28
Maclura, Magnolia	29
Malus	29-33
Metasequoia, Nyssa, Ostrya	33
Platanus	33-34
Populus, Prunus, Ptelea	34
Quercus	35-37
Salix, Sassafras	37
Syringa	37-38
Taxodium	38
Tilia	38-39
Ulmus	39-41
Zelkova	41

FLOWERING SHRUBS

Cornus, Cotinus, Hamamelis	42
Hydrangea	42-43
Syringa, Viburnum	43

EVERGREENS

Buxus	44
Juniperus	44-45
Picea	45
Pinus	46
Thuja	46-47

2025 Freight Costs

Approximate freight rates per semi-load for selected cities. **Rates on LTL are calculated off base rates and vary per load. *\$100 per drop. Rates are estimates and subject to change.**

Chicago-area range, South Side through North Side	\$700-\$850	Detroit, MI area	\$1,500	Peoria, IL	\$850
Bloomington, IL	\$800	Fort Collins, CO	\$3,300	Pittsburgh, PA	\$2,500
Boston, MA	\$3,500	Fort Wayne, IN	\$1,000	Quad Cities (IL, IA)	\$1,000
Cedar Rapids, IA	\$1,300	Grand Rapids, MI	\$1,200	Springfield, IL	\$900
Champaign, IL	\$700	Indianapolis, IN	\$1,000	St. Louis, MO	\$1,500
Cincinnati, OH	\$1,500	Kansas City, MO	\$2,500	Toronto, ON	\$2,200
Colorado Springs, CO	\$3,500	Little Rock, AR	\$2,800	Traverse City, MI	\$1,900
Columbus, OH	\$1,600	Madison, WI	\$1,100	Tulsa, OK	\$2,800
Dallas, TX	\$3,500	Milwaukee, WI	\$1,000	Twin Cities, MN	\$1,800
Denver, CO	\$3,300	Oklahoma City, OK	\$3,200		
Des Moines/Ames, IA	\$1,750	Omaha, NE	\$1,700		

Plant Particulars

Kankakee Nursery ships plants all over the United States and Canada. These handy charts provide you with all the miscellaneous details necessary for setting up your plant delivery.

Plant Type	Plant Size	Diameter of Ball/Pot	Number of Plants to Fill a Semi	Estimated weight in pounds
Trees (Single Stem & Clump)	#15 Root Pouch	17"	250	100
	#20 Plastic Container	19.5"	160	140
	#25 Plastic Container	22.75"	140	200
	1.5"-1.75" & 5' BB	24"	110	250
	2" & 6-7' BB	26"	90	325
	2.5" & 8-9' BB	28"	70	500
	3" & 10' BB	32"	50	700
	3.5" & 12' BB	36"	35	1,000
Arborvitae/ Junipers	4" & 14' BB	40"	24	1,400
	#15 Root Pouch	17"	250	100
	4' BB	18-20"	140	100
	5' BB	20-22"	120	150
	6' BB	22-24"	100	200
	7' BB	24-26"	90	250
	8' BB	26-28"	75	300

Note: Ball weights will increase significantly when wet.





Container Sizing

In response to the new container sizing regulations for industry retailers, we have provided a chart of the containers we use in our production operation. The information listed below will help with your compliance to the Uniform Weights and Measures Law and the Uniform Packaging and Labeling Regulations.

Brand/Style	Trade Size	Actual Gallon	Liter
Classic	#10 Squat	10.7	40.4
Classic	#15	13.2	49.9
Classic	#20	19.6	74.2
Classic	#25	27.7	104.4
Root Pouch	#15	14.99	56.78
Root Pouch	#25	25.00	94.64

Volume Discount Policy

Discount levels are based on previous year's sales volume paid within Kankakee Nursery's agreed upon terms.

\$20,000 - \$39,999	4%
\$40,000 - \$59,999.....	6%
\$60,000 - \$79,999.....	8%
\$80,000 - \$99,999.....	10%
\$100,000+	12%

Kankakee Nursery reserves the right to change or cancel the program at any time.

Terms & Conditions

- Usual trade terms to customers with established credit.
- First order always COD.
- Visa, MasterCard, American Express and Discover accepted on COD orders.
- Interest is charged on past-due accounts. A finance charge of 1.5% per month (annual interest rate 18%) is applied to invoices unpaid at the end of the month following the month in which the invoice is due.

Tagging

Tagging stock in the field is subject to the approval of management. A charge of 10% will be added to the cost of items tagged for spring digging.

Holding Charges

Please pick up plant material when ready. Starting on June 1, a holding charge of \$2 per tree per workday will be assessed to spring-dug orders that have not been picked up. Additionally, orders not picked up in a timely fashion may be placed back in inventory and sold.

Truck Delivery

We offer trucking (semi) service to any part of the United States or Canada. A minimum order of \$2,000 is necessary for this service. All goods travel at the purchaser's risk and expense. See chart on page 4 for shipping rates.

Unloading of Material

Customers are required to have the manpower and equipment necessary to unload the material. We charge an unloading detention fee of \$75 per hour after 2 hours.

Cancellations

We do not accept cancellations for balled and burlapped material that has already been dug.

Claims

We shall not entertain claims for any cause after goods have been accepted or when a report is not made in writing within 10 days after arrival of stock.

Summer Digging

A 15% charge will be added to the price of all summer-dug trees. We assume no responsibility for plants purchased for out-of-season digging.

Guarantee

If any nursery stock proves untrue to the description or variety name under which it is sold, Kankakee Nursery will, with proper proof, replace such nursery stock or refund the original amount paid. We shall in no case be liable for any sum greater than the amount originally paid for said nursery stock.

Kankakee Nursery Staff



Steven Curren Jr.

Production Manager
stevejr@kankakeenursery.com

Steve has been with Kankakee Nursery since 1996 and now serves as our Production Manager after getting his start in container shrub and pot-in-pot tree production. Steve received his degree in plant and soil sciences from Southern Illinois University.



John Worth

Inventory Manager
johnw@kankakeenursery.com

John serves as our inventory manager – tracking, selecting, and sizing our inventory in all its sizes and forms. He holds a degree in business management/entrepreneurship from Saint Louis University.



Amy Curren Baker

Office Manager
amy@kankakeenursery.com

P: 815-614-5568

Amy joined Kankakee Nursery 23 years ago after graduating with a degree in marketing from Eastern Illinois University. As office manager, Amy handles all of our AR/AP and HR responsibilities.



Nick Worth

Crew Leader

Nick supervises numerous aspects of plant care at the nursery. His daily duties include irrigation maintenance, weed control and machine operation.



Chuck Davis, ICN Pro

Propagation Manager
chuckd@kankakeenursery.com

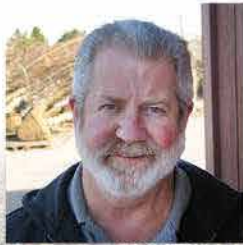
Chuck has 38 years of experience in nursery production, over 30 of them at Kankakee. He holds a degree in ornamental horticulture from University of Illinois.



Jeff Franklin

Weed & Pest Control/Facilities Manager
jefff@kankakeenursery.com

Jeff began his Kankakee career in 1999 as a tractor driver and now runs our weed and pest control program. He is also in charge of all of our facilities and equipment. Jeff received his degree in Agriculture from Purdue University and also runs an organic vegetable farm, Deer Creek Organics.



Tim Lagesse

Shipping Manager
tim@kankakeenursery.com

Tim runs the loading dock and shipping yard for Kankakee, while also serving as quality control for the thousands of plants shipped each year. He has been with Kankakee for 45 years.

We would like to thank all of our employees for their loyalty to our company. 2025 marks many loyal years from all we consider part of our family.





Employee Service Anniversaries

45+ YEARS

Agustin Ayala
Abel Cintora
Pedro Diaz
Jose Angel G. Guzman
Tim J. Lagesse

40+ YEARS

David Andrade Cintora
Jose Andrade
Reimundo Andrade Cintora
Salomon Avalos Gaytan
Jose Diaz-Alvarado
Trinidad Gaytan Alvarado

35+ YEARS

Jose R. Avalos Gaytan
Jose Baltazar Alvarado
James Davis
Mario G. Camargo
Jesus Moreno

30+ YEARS

Leopoldo Aguilar Zamora
Gaudencio Z. Avalos
Robert Davis
J. Guadalupe Medina Z

25+ YEARS

Silviano Campos Andrade
Rodolfo Gonzalez Andrade

20+ YEARS

Angel Andrade Campos
Benjamin Barbosa
J. Jesus Carmona-Vallejo
Hubelio Cintora
Guillermo Ortiz
Santiago Padilla
Peter Reeser
Guadalupe Ruiz
Ramon Zarate Jr.

10+ YEARS

Magdalena Andrade Dediaz
Rosalina Ayala Cintora
Blanca E. Campos Andrade
Mary Davis
Jose F. Gonzalez Gaytan
Artemio Guerrero
Michael Lesage
Juana Orozco

5+ YEARS

Roberto Ayala
Araceli Andrade
Bulmaro Gonzalez Moreno
Josefina Cintora
Camelia Lopez
Marcela Medina Desantoyo
Eduardo Medina
Martha Orozco Rodriguez
Manuel Zavala Luna

Kankakee Nursery Field Crew

Everyone knows how difficult it's been to find hardworking, conscientious, and reliable employees over the last couple of years. We would not function without the effort and care that each and every one of our loyal employees puts into their work. We are thankful for them every day and are extremely lucky they are a part of the Kankakee Nursery family.

Todo sabe lo difícil que ha sido encontrar empleados trabajadores, concienzudos y fiables en los últimos años. No funcionaremos sin el esfuerzo y cuidado que cada uno de nuestros fieles empleados ponen en su trabajo. Estamos agradecidos por ellos todos los días y tenemos mucha suerte de que sean parte de la familia de Kankakee Nursery.



Agustin Ayala
Field Production Supervisor

As field production supervisor, Agustin leads a wide array of production duties including irrigation, planting and bare root digging. He has been at Kankakee for 46 years and also serves as our field personnel manager.



Jose R Avalos Gaytan
Field Operations Supervisor

"Beto" started at Kankakee in 1989 and coordinates the transport of all of our dug trees from the field to the loading dock. In the summer, he helps lead our tree planting and assists with tagging and quality control.



Pedro Diaz
Pruning and Bare Root Supervisor

Our longest-tenured employee, Pedro has been with Kankakee for 49 years. He is in charge of tree pruning in the field as well as maintaining the tens of thousands bare root trees we propagate and purchase.



Angel Andrade Campos
Tree Digging Supervisor

With Kankakee since 2001, Angel worked for years in propagation before recently taking on the large task of managing our tree harvest. Angel helps tag and track our tens of thousands of field-grown trees every year.



Reyes Cintora
Evergreen Supervisor

With over four decades of shrub digging experience, Reyes now focuses exclusively on managing our evergreen digging and shearing. He's been with Kankakee for 41 years.



Ramon Zarate Jr
Container Supervisor

Along with Balta, Ramon oversees all of our container production including potting, irrigation and order pulling. He also assists with bare root tree storage and planting. 2024 marks Ramon's 22nd year with Kankakee.



Balta Alvarado
Container Supervisor

Balta has been with Kankakee for 39 years, working predominantly in our container plants. He is hands-on with all aspects of our container operation and also assists in tree planting.



David Andrade Cintora
Truck Loading & Tree Budding Supervisor

A jack of all trades, David is our go-to truck loader as well as an expert tree grafter. Check out our YouTube page to see some of David's grafting skills. He's been with us for 42 years.





Jose Batrez Jr & Oscar Martinez

Contract Tree Diggers

Jose and Oscar now lead our spring and fall B&B tree harvest. They worked for our previous digger, Dennis Fritts, for over 20 years.



Jim Davis

Head Mechanic

Our head mechanic and with us for 34 years, Jim and his crew work year-round to ensure our machinery is operating at full capacity.



Mike Lesage

Mechanic

Mike assists in maintaining our nursery fleet and specializes in electrical diagnostics and repair. He's been a member of the Kankakee team since 2007.



David Propes

Mechanic

David joined the mechanic team in 2023 and assists Jim and Mike with anything from fueling machines to general repair and maintenance.

The extension of the Kankakee Nursery staff that hauls and delivers for the nursery.



Bill Shives

Shives Trucking

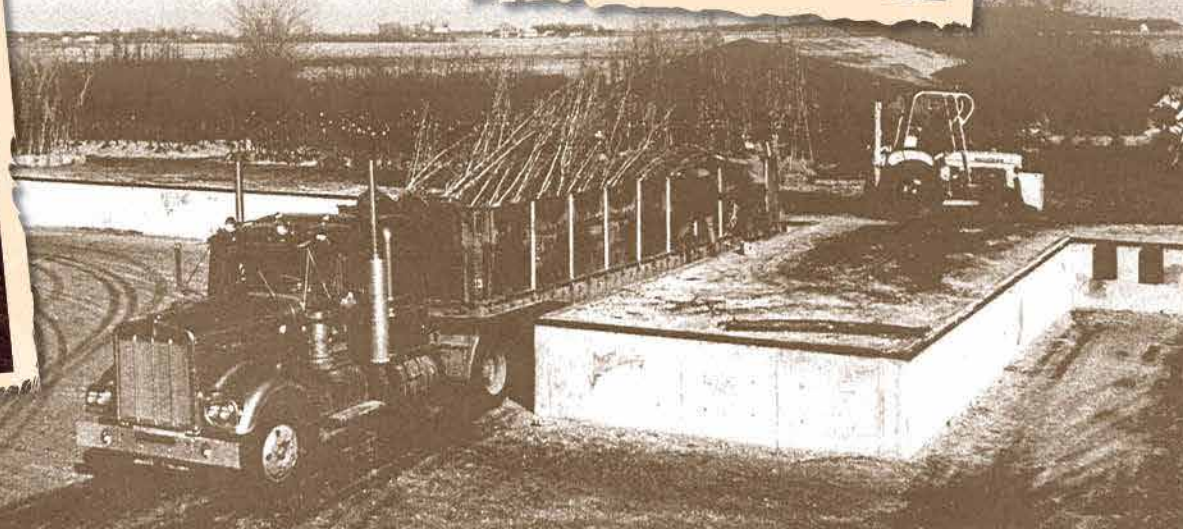
While not technically an employee, Bill has hauled loads all over the Midwest for Kankakee Nursery for more than 30 years. Bill is so familiar with our customers, he's been known to prepare the coffee for their office when he arrives.



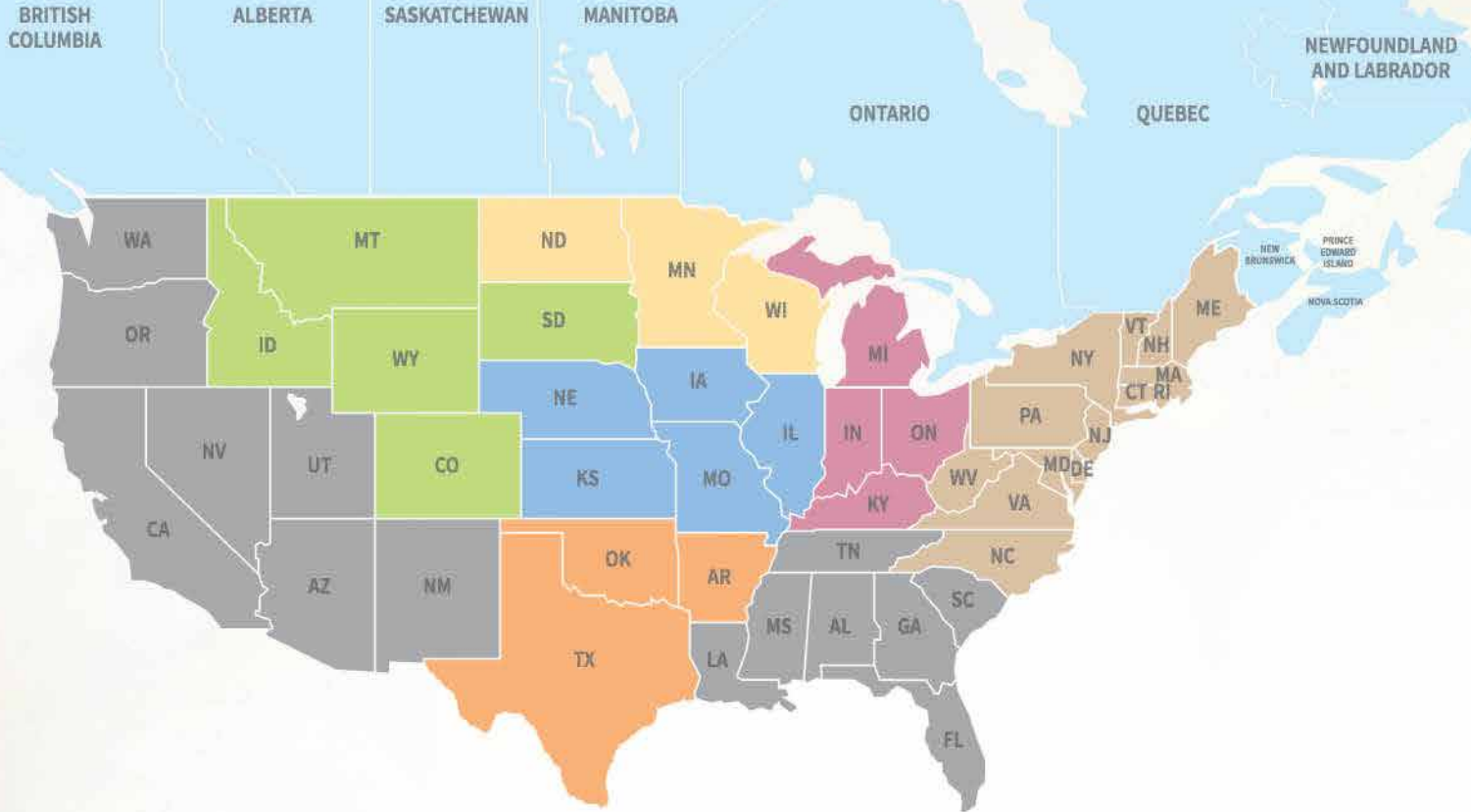
Pat Cooksey

Cooksey Trucking

Although he officially started his own company in 2015, Pat has delivered loads for Kankakee since 1999.



Kankakee Nursery Sales Staff and Territories



Pete Worth

Sales & Marketing Manager
Territory: Canada

petew@kankakeenursery.com

P: 815-614-5556

Pete joined Kankakee as an inside sales representative in the summer of 2009 after receiving his bachelor's degree from Marquette University. In addition to his sales duties, Pete designs our email marketing campaigns and maintains our constantly-expanding website.



Michael Porter

IL Certified Arborist 4325A

Territories:
(IL, IA, NE, KS, MO)

michaelp@kankakeenursery.com

C: 815-391-0987

Michael Porter began his Kankakee Nursery career in August of 2021 and has over 30 years of experience in the green industry. Michael has a degree in horticulture from the University of Michigan.



Peter Reeser

Territories:
(CO, SD, WY, ID, MT)

peter@kankakeenursery.com

C: 719-671-4462

Peter has covered Colorado and the Rocky Mountain states for Kankakee since 1996 and has been in the nursery industry for 43 years. His experience includes management positions in retail/wholesale garden centers and in field-growing operations. He holds a degree in botany from Eastern Illinois University.



David Kieser

Territories: (IN, KY, MI, OH)

david@davidkcompany.com

C: 260-750-2197

David joined Kankakee Nursery in July of 2023 as our new representative in Indiana, Michigan, Ohio and Kentucky. He brings with him nearly 30 year's experience in the green industry, including landscaping and landscape design. He has a degree in horticulture from the University of Illinois at Urbana-Champaign.





*Then
&
Now*

Preston Dyer

Territories: (AR, OK, TX)
preston@kankakeenursery.com
 C: 630-862-4555

Preston hopped on board the Kankakee team in September of 2023 as our first-ever sales rep in the South-Central U.S. Preston has over 20 year's experience in horticulture and agriculture sales and carries a deep-rooted passion for people and the green industry.



The Kankakee Nursery sales team prides itself in its wealth of horticultural experience to help you with your plant needs. We believe our latest two additions further cement our team as one of the most knowledgeable in the industry.

Welcome Tim and Steve!

Tim Bostian

Territories: (MN, ND, WI)
tim@bostianhort.com
 C: 630-414-4797

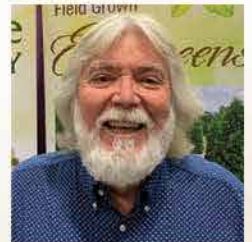
Tim joined the Kankakee family in the summer of 2024, taking over servicing customers in Minnesota and Wisconsin. He holds a bachelor's degree from South Dakota State University and has over 20 years of industry experience in sales and management at various nurseries and landscape companies across the country.



Steve Wagner

Territories:
 (CT, DC, DE, MA, MD, ME, NC, NH, NJ, NY, PA, RI, VA, VT, WV)
stevefortrees@live.com
 C: 856-725-1462

Steve joined the team in spring of 2024 and is now our inaugural salesperson for the East coast. Steve is a resident of New Jersey and has over 40 years of green industry experience, including over 30 in nursery production. Over his career, he has contributed his vast industry knowledge in leadership positions within multiple New England horticultural associations.



NEW!

PLANTS FOR 2025

A *Acer rubrum* 'Bowhall'
Bowhall Red Maple

B *Alnus incana* subsp. *rugosa*
Speckled Alder

C *Carpinus betulus* 'Rockhampton Red'
Rockhampton Red

D *Carpinus betulus* 'Frans Fontaine'
Frans Fontaine European Hornbeam

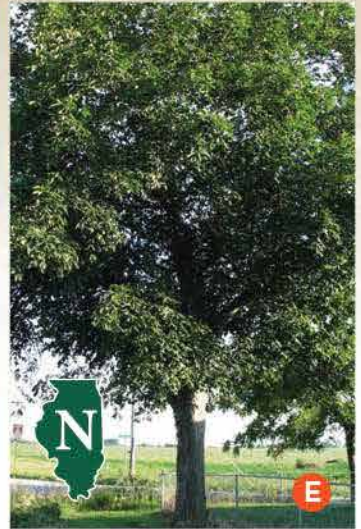
E *Carya laciniosa*
Shellbark Hickory

F *Cercis canadensis* 'RNI-RCC3'
Midnight Express™ Redbud

G *Tilia* 'zamoyskiana'
Centennial™ Linden

H *Juniperus* x 'J.N. Select Blue'
Star Power™ Juniper

I *Juniperus virginiana*
Eastern Red Cedar



Plants for Problem Sites

SALT TOLERANT TREES

Amelanchier (Serviceberry)
 Catalpa
 Gleditsia (Honeylocust)
 Gymnocladus (Kentucky Coffeetree)
 Syringa Ivory Silk Lilac
 Syringa Japanese Tree Lilac
 Taxodium (Bald Cypress)

WET SITE TREES

Acer Rubrum (Red Maple)
 Aesculus Ohio Buckeye
 Betula (Birch)
 Quercus bicolor Swamp White Oak
 Quercus ellipsoidalis Northern Pin Oak
 Salix Niobe Willow
 Taxodium (Bald Cypress)

SHADE TOLERANT EVERGREENS

Buxus (Boxwood)
 Juniperus Hillspire Juniper
 Picea Norway Spruce
 Thuja Brabant Arborvitae
 Thuja Green Giant Arborvitae
 Thuja Technito® Arborvitae

SHADE TOLERANT TREES

Acer Palmatum (Japanese Maple)
 Acer Saccharum (Sugar Maple)
 Aesculus Ohio Buckeye
 Amelanchier (Serviceberry)
 Carpinus (Hornbeam)
 Cercis (Redbud)
 Nyssa (Blackgum)
 Ostrya (Hophornbeam/Ironwood)
 Platanus (Planetree/Sycamore)
 Quercus Swamp White Oak
 Salix Niobe Willow

DRY SITE TREES

Acer Ginnala (Amur Maple)
 Celtis (Hackberry)
 Crataegus (Hawthorn)
 Gleditsia (Honeylocust)
 Ulmus (Elm)

WET SITE EVERGREENS

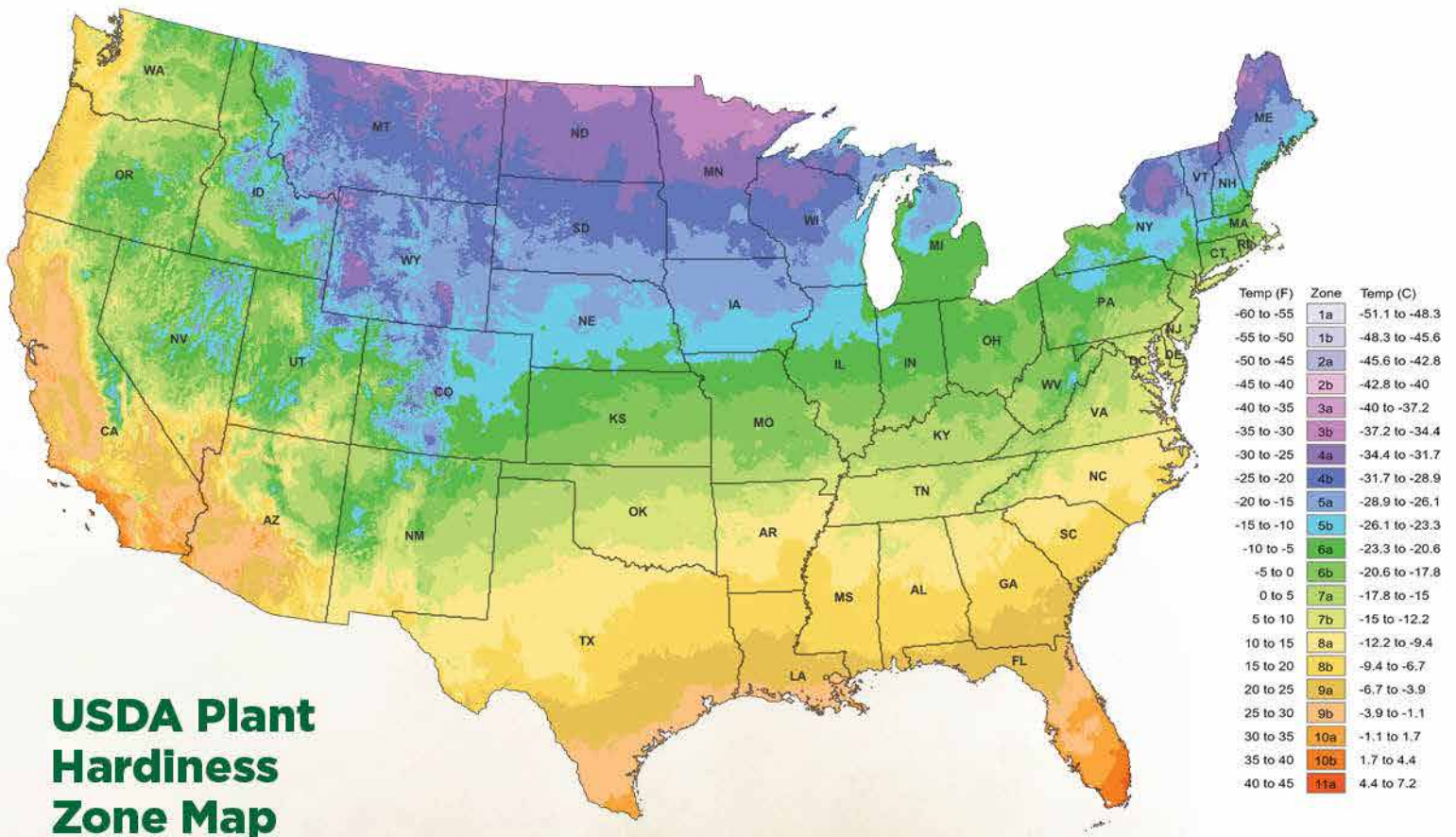
Thuja (Arborvitae)

DRY SITE EVERGREENS

Juniperus (Juniper)

SALT TOLERANT EVERGREENS

Juniperus (Juniper)



Plants for Problem Sites

SALT TOLERANT TREES

Amelanchier (Serviceberry)
 Catalpa
 Gleditsia (Honeylocust)
 Gymnocladus (Kentucky Coffeetree)
 Syringa Ivory Silk Lilac
 Syringa Japanese Tree Lilac
 Taxodium (Bald Cypress)

WET SITE TREES

Acer Rubrum (Red Maple)
 Aesculus Ohio Buckeye
 Betula (Birch)
 Quercus bicolor Swamp White Oak
 Quercus ellipsoidalis Northern Pin Oak
 Salix Niobe Willow
 Taxodium (Bald Cypress)

SHADE TOLERANT EVERGREENS

Buxus (Boxwood)
 Juniperus Hillspire Juniper
 Picea Norway Spruce
 Thuja Brabant Arborvitae
 Thuja Green Giant Arborvitae
 Thuja Technito® Arborvitae

SHADE TOLERANT TREES

Acer Palmatum (Japanese Maple)
 Acer Saccharum (Sugar Maple)
 Aesculus Ohio Buckeye
 Amelanchier (Serviceberry)
 Carpinus (Hornbeam)
 Cercis (Redbud)
 Nyssa (Blackgum)
 Ostrya (Hophornbeam/Ironwood)
 Platanus (Planetree/Sycamore)
 Quercus Swamp White Oak
 Salix Niobe Willow

DRY SITE TREES

Acer Ginnala (Amur Maple)
 Celtis (Hackberry)
 Crataegus (Hawthorn)
 Gleditsia (Honeylocust)
 Ulmus (Elm)

WET SITE EVERGREENS

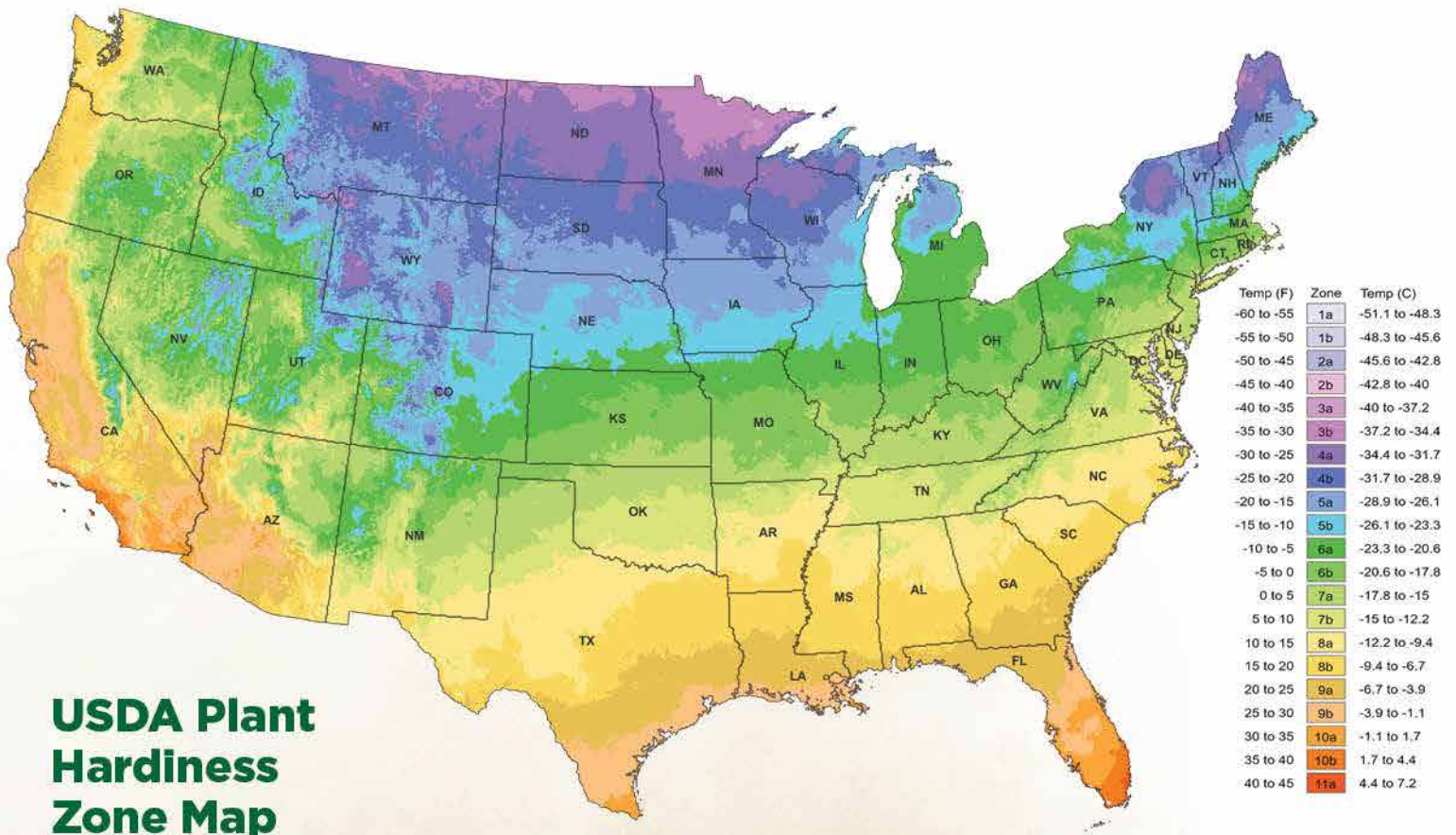
Thuja (Arborvitae)

DRY SITE EVERGREENS

Juniperus (Juniper)

SALT TOLERANT EVERGREENS

Juniperus (Juniper)



USDA Plant Hardiness Zone Map



Hedge Maple ● ●

Acer campestre

Height: 25'-35' Spread: 25'-35'
 Shape: Rounded; dense
 Foliage: Rich green
 Zones: 5-8

Sizes	
1.75" BB	
2" BB	
2.5" BB	
3" BB	
3.5" BB	



Marmo Maple ● ●

Acer x freemanii 'Marmo'

Height: 70' Spread: 35'
 Shape: Upright ; oval to broad columnar
 Foliage: Green; gray underside
 Zones: 4-7

Sizes	
1.5" BB	3" BB
1.75" BB	3.5" BB
2" BB	4" BB
2.5" BB	



Armstrong Maple ●

Acer x freemanii 'Armstrong'

Height: 50'-70' Spread: 15'
 Shape: Narrow Columnar
 Foliage: Yellow-orange in fall
 Zones: 3-7

Sizes	
1.75" BB	#25 1.5"
2" BB	#25 1.75"
2.5" BB	#25 2"
3" BB	



Flame Amur Maple ● ●

Acer ginnala 'Flame'

Height: 15'-20' Spread: 15'-20'
 Shape: Rounded
 Foliage: Fiery red in fall
 Zones: 3-7

Sizes	
4' BB Clump	
5' BB Clump	
6' BB Clump	
7' BB Clump	
8' BB Clump	



Autumn Blaze[®] Maple ●

Acer x freemanii 'Jeffersred'

Height: 50' Spread: 40'
 Shape: Dense; round
 Foliage: Orange/red in fall
 Zones: 4-7

Sizes	
1.5" BB	3.5" BB
1.75" BB	4" BB
2" BB	#25 1.5"
2.5" BB	#25 1.75"
3" BB	#25 2"



State Street[™] Maple ●

Acer miyabei 'Morton'

Height: 30' Spread: 20'
 Shape: Oval to rounded; dense
 Foliage: Thick in summer; yellow in fall
 Zones: 4-8

Sizes	
1.5" BB	3" BB
1.75" BB	#25 1.5"
2" BB	#25 1.75"
2.5" BB	#25 2"



Bloodgood Japanese Maple



Acer palmatum 'Bloodgood'
 Height: 15'-20' Spread: 15'-20'
 Shape: Rounded to broad-rounded; low branching
 Foliage: Deep reddish-purple
 Zones: 5-8

Sizes

10 RP



Deborah Maple

Acer platanoides 'Deborah'

PP 4,944
 Height: 50' Spread: 45'
 Shape: Rounded-broad rounded outline
 Foliage: Red new growth, turns dark green
 Zones: 4-7

Sizes

1.75" BB

2" BB

2.5" BB

3" BB



Tamukeyama Japanese Maple



Acer palmatum var. dissectum 'Tamukeyama'
 Height: 6'-8' Spread: 8'-12'
 Shape: Rounded, shrubby
 Foliage: Deep reddish purple
 Zones: 5-8

Sizes

10 RP



Emerald Queen Maple

Acer platanoides 'Emerald Queen'

Height: 50' Spread: 40'
 Shape: Rounded; oval outline
 Foliage: Glossy green
 Zones: 4-7

Sizes

1.5" BB

1.75" BB

2" BB

2.5" BB

3" BB



Columnar Norway Maple

Acer platanoides 'Columnare'

Height: 60' Spread: 15'-20'
 Shape: Narrow
 Foliage: Dark green, yellow in fall
 Zones: 3-7

Sizes

1.5" BB

1.75" BB

2" BB

2.5" BB

3" BB



Bowhall Red Maple

Acer rubrum 'Bowhall'

Height: 40' Spread: 15'
 Shape: Upright, narrow
 Foliage: Dark green to yellow/orange/red in fall
 Zones: 4-8

Sizes

1.5" BB

1.75" BB

2" BB



Brandywine Red Maple

Acer rubrum 'Brandywine'

Height: 35'-50' Spread: 25'-40'
 Shape: Pyramidal upright
 Foliage: Green; scarlet in fall
 Zones: 4-9

Sizes
2" BB
2.5" BB
3" BB
3.5" BB



Armstrong Gold Maple

Acer rubrum 'JFS-KW78'
 PP25301

Height: 40' Spread: 12'
 Shape: Upright, pyramidal
 Foliage: Green; yellow-orange in fall
 Zones: 4-9

Sizes
1.75" BB
2" BB
2.5" BB



Redpointe Red Maple

Acer rubrum 'Frank Jr.'

Height: 45' Spread: 30'
 Shape: Broadly pyramidal
 Foliage: Dark green; bright red in fall
 Zones: 5-8

Sizes	
1.5" BB	3.5" BB
1.75" BB	4" BB
2" BB	#25 1.5"
2.5" BB	#25 1.75"
3" BB	#25 2"



October Glory Red Maple

Acer rubrum 'October Glory'

Height: 40'-50' Spread: 40'-50'
 Shape: Round-headed
 Foliage: Green; orange to red in fall
 Zones: 5-8

Sizes	
1.75" BB	3" BB
2" BB	3.5" BB
2.5" BB	

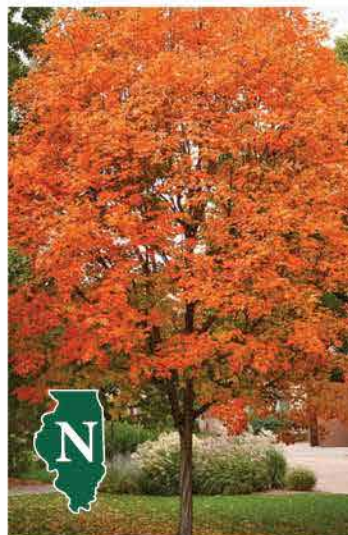


Red Sunset Red Maple

Acer rubrum 'Franksred'

Height: 40'-50' Spread: 35'-40'
 Shape: Rounded to oval
 Foliage: Green; red in fall
 Zones: 4-7

Sizes
1.75" BB
2" BB
2.5" BB
3" BB



Sugar Maple

Acer saccharum

Height: 60'-75' Spread: 40'-50'
 Shape: Oval, rounded
 Foliage: Green to yellow-orange in fall
 Zones: 4-8

Sizes
#15 RP



Fall Fiesta[®] Sugar Maple

Acer saccharum 'Bailsta'

Height: 60'-70' Spread: 30'-45'
 Shape: Broadly oval
 Foliage: Dark green to orange/red/
 yellow in fall
 Zones: 3-8

Sizes	
1.5" BB	#25 1.5"
1.75" BB	#25 1.75"
2" BB	#25 2"
2.5" BB	#15 RP
3" BB	



Silver Queen Silver Maple

Acer saccharinum 'Silver Queen'

Height: 50'-70' Spread: 40'-50'
 Shape: Upright
 Foliage: Light green, silver undersides
 Zones: 3-7

Sizes	
3" BB	
3.5" BB	
4" BB	



Commemoration[®] Sugar Maple

Acer saccharum 'Commemoration'

PP 5,079
 Height: 50' Spread: 35'
 Shape: Oval to rounded
 Foliage: Glossy dark green; red to orange in fall
 Zones: 4-7

Sizes	
1.75" BB	2.5" BB
2" BB	3" BB



Hot Wings[®] Tatarian Maple

Acer tataricum 'GarAnn'

Height: 20'-25' Spread: 18'-20'
 Shape: Upright branching
 Foliage: Green; orange-red in fall with bright red samaras
 Zones: 3-6

Sizes	
1.5" BB	#20 1.5"
1.75" BB	#20 1.75"
2" BB	#20 2"
2.5" BB	
3" BB	



Green Mountain[®] Sugar Maple

Acer saccharum 'Green Mountain'

Height: 70' Spread: 45'
 Shape: Upright oval crown
 Foliage: Dark green; yellow-orange in fall
 Zones: 4-7

Sizes	
1.75" BB	
2" BB	
2.5" BB	



Crimson Sunset[®] Maple

Acer truncatum x *platanooides* 'JFS-KW202'

PP 21838
 Height: 35' Spread: 25'
 Shape: Upright oval
 Foliage: Deep purple
 Zones: 4

Sizes	
1.5" BB	#25 1.5"
1.75" BB	#25 1.75"
2" BB	#25 2"
2.5" BB	

Trees



Autumn Splendor Buckeye

Aesculus x arnoldiana
'Autumn Splendor'
Height: 35' Spread: 25'-30'
Shape: Upright; oval
Flower Color: Large yellow
Foliage: Glossy green; burgundy in fall
Zones: 3-8

Sizes

#25 1.5" RP

#25 1.75" RP

#25 2" RP



Early Glow[®] Ohio Buckeye

Aesculus glabra 'J.N. Select'
Height: 35' Spread: 35'
Shape: Oval, rounded with age
Flower Color: Yellow-green
Foliage: Dark green, red-orange in fall
Zones: 3-7

Sizes

#25 1.5" RP

#25 1.75" RP

#25 2" RP



Fort McNair Horsechestnut

Aesculus x carnea 'Fort McNair'
Height: 30'-40' Spread: 20'-30'
Shape: Compact
Flower Color: Pink, yellow throats
Foliage: Dark green; yellow to orange in fall
Zones: 5-9

Sizes

#25 1.5" RP

#25 1.75" RP

#25 2" RP



Red Buckeye

Aesculus pavia
Height: 15'-20' Spread: 15'-25'
Shape: Rounded
Flower Color: Red
Foliage: Green
Zones: 4-8

Size

#15 RP



Ohio Buckeye

Aesculus glabra
Height: 20'-40' Spread: 20'-40'
Shape: Broad, oval-rounded
Flower Color: Greenish-yellow
Foliage: Dark green, yellow in fall
Zones: 3-7

Sizes

#25 1.5" RP

#25 1.75" RP

#25 2" RP



Speckled Alder

Alnus incana subsp. rugosa
Height: 15'-25' Spread: 15'-25'
Shape: Rounded, spreading
Foliage: Green
Zones: 3-6

Size

#15 RP

NEW! New Product

N Native to Illinois

Nativar Native Cultivar

☀ Full Sun

☀/☁ Partial Shade

☁/☀ Full Shade

BB Balled & Burlapped

RP Root Pouch



Spaeths Alder ☀️ 🌑

Alnus spaethii

Height: 40'-50' Spread: 25'-30'
 Shape: Pyramidal, broadly rounded
 Foliage: Green; yellow/gold in fall
 Zones: 4-7

Sizes
1.75" BB
2" BB
2.5" BB
3" BB



Princess Diana Serviceberry Tree ☀️ 🌑

Amelanchier x grandiflora
 'Princess Diana'

Height: 15'-20' Spread: 12'-15'
 Shape: Upright, vase-like
 Flower Color: White clusters
 Foliage: Brilliant red in fall
 Zones: 4-9

Sizes
1.5" BB
1.75" BB
2" BB
2" BB



Shadblow Serviceberry ☀️ 🌑

Amelanchier canadensis

Height: 6'-15' Spread: 15'-20'
 Shape: Rounded crown
 Flower Color: White and pink
 Foliage: Yellow-orange in fall
 Zones: 4-7

Sizes
4' BB Multi-stem
5' BB Multi-stem
6' BB Multi-stem
7' BB Multi-stem



Allegheny Serviceberry ☀️ 🌑

Amelanchier laevis

Height: 15'-25' Spread: 15'-25'
 Shape: Rounded/compact
 Flower Color: White
 Foliage: Green; yellow-orange in fall
 Zones: 4-8

Sizes
4' Multi-stem
5' Multi-stem
6' Multi-stem
7' Multi-stem



Autumn Brilliance Serviceberry ☀️ 🌑

Amelanchier x grandiflora
 'Autumn Brilliance'

PP 5,717
 Height: 20'-25' Spread: 15'-18'
 Shape: Rounded crown
 Flower Color: White
 Foliage: Brilliant red-orange in fall
 Zones: 3-8

Sizes		
4' BB Multi-stem	1.5" BB Tree form	#25 4' Multi-stem
5' BB Multi-stem	1.75" BB Tree form	#25 5' Multi-stem
6' BB Multi-stem	2" BB Tree form	#25 6' Multi-stem
7' BB Multi-stem	#20 1.5"	#15 RP Multi-stem
8' BB Multi-stem	#20 1.75"	

Trees



Common Paw Paw



Asimina triloba

Height: 15'-30' Spread: 15'-30'
 Shape: Pyramidal
 Flower: Burgundy
 Foliage: Green; yellow in fall
 Zones: 5-9

Size

#15 RP



Renaissance Oasis® Paper Birch

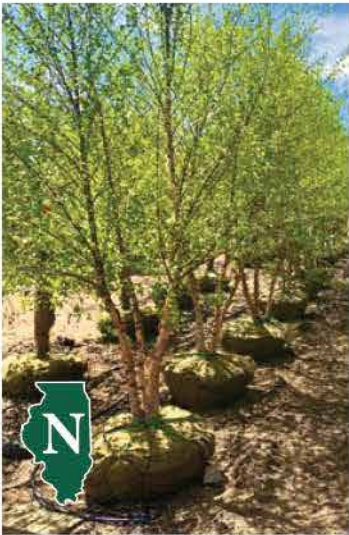


Betula papyrifera 'Oenci'

Height: 50' Spread: 30'
 Shape: Broadly pyramidal to oval
 Foliage: Dark Green
 Zones: 3-5

Sizes

7' BB	#25 6'
8' BB	#25 7'
10' BB	#25 8'
12' BB	#25 10'



River Birch (FDR)



Betula nigra

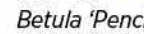
Height: 40'-70' Spread: 40'-60'
 Shape: Pyramidal to oval headed;
 rounded at maturity
 Foliage: Medium to dark green
 Zones: 4-8

Sizes

7' BB Clump	1.75" BB	4" BB
8' BB Clump	2" BB	#25 1.5"
10' BB Clump	2.5" BB	#25 1.75"
12' BB Clump	3" BB	#25 2"
	3.5" BB	#15 RP Tree



Royal Frost® Birch



Betula 'Penci-2'

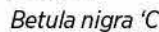
Height: 40'-50' Spread: 20'-25'
 Shape: Pyramidal
 Foliage: Burgundy to dark purple
 Zones: 4-7

Sizes

#25 Clump 6'
#25 Clump 7'
#25 Clump 8'
#25 Clump 10'



Heritage® River Birch



Betula nigra 'Cully'

Height: 40' Spread: 30'
 Shape: Pyramidal to oval headed;
 rounded at maturity
 Foliage: Yellow in fall
 Zones: 4-8

Sizes

#25 6'	#25 10'
#25 7'	#15 RP Multistem
#25 8'	



Whitespire Birch



Betula populifolia 'Whitespire'

Height: 20'-40' Spread: 10'-20'
 Shape: Pyramidal to oval
 Foliage: Dark green, yellow in fall
 Zones: 3-6

Sizes

7' BB	#25 6'
8' BB	#25 7'
10' BB	#25 8'
	#25 10'





Lucas Columnar European Hornbeam

Carpinus betulus 'lucas'
 Height: 30' Spread: 10'
 Shape: Upright, pyramidal
 Foliage: Dark green; yellow to brown in fall
 Zones: 7

Sizes
1.5" BB
1.75" BB
2" BB
2.5" BB



Rockhampton Red

Carpinus betulus 'Rockhampton Red'
 Height: 45'-50' Spread: 32'-40'
 Shape: Upright, spreading
 Foliage: Green/Orange-Red in Fall
 Zones: 4-8

Sizes
1.75" BB
2" BB
2.5" BB



Pyramidal European Hornbeam

Carpinus betulus 'fastigiata'
 Height: 35'-45' Spread: 15'-25'
 Shape: Upright, pyramidal
 Foliage: Green; yellow to brown in fall
 Zones: 4-8

Sizes
1.75" BB
2" BB
2.5" BB



American Hornbeam

Carpinus caroliniana
 Height: 20'-30' Spread: 20'-30'
 Shape: Compact; globular
 Foliage: Dark Green; yellow, orange and scarlet in fall
 Zones: 3-9

Sizes	
1.75" BB	4' BB Multi-stem
2" BB	5' BB Multi-stem
2.5" BB	6' BB Multi-stem
3" BB	7' BB Multi-stem
	#15 RP Tree



Frans Fontaine European Hornbeam

Carpinus betulus 'Frans Fontaine'
 Height: 35' Spread: 15'
 Shape: Narrow, columnar
 Foliage: Green/Golden-Yellow in Fall
 Zones: 4-8

Sizes
1.75" BB
2" BB
2.5" BB



Shellbark Hickory

Carya laciniosa
 Height: 75'-100' Spread: 50'-75'
 Shape: Oval
 Foliage: Green to golden-brown in fall
 Zone: 4-9

Size
#15 RP

Trees



Shagbark Hickory



Carya ovata

Height: 60'-80' Spread: 30'-50'
 Shape: Oval, Irregular
 Foliage: Medium green, yellow in fall
 Zone: 4-9

Size

#15 RP



Sugarberry

Celtis laevigata

Height: 50'-70' Spread: 50'-60'
 Shape: Rounded, vase
 Flower Color: Green-white
 Foliage: Light green; yellow in fall
 Zones: 5-10

Size

#15 RP



Northern Catalpa

Catalpa speciosa

Height: 50' Spread: 30'
 Shape: Columnar; dense
 Flower Color: White
 Foliage: Light green
 Zones: 4-7

Sizes

1.75" BB 3.5" BB

2" BB 4" BB

2.5" BB #15 RP

3" BB



Common Hackberry

Celtis occidentalis

Height: 40'-60' Spread: 40'-45'
 Shape: Rounded spreading crown
 Foliage: Green
 Zones: 2-7

Sizes

1.75" BB #25 1.5"

2" BB #25 1.75"

2.5" BB #25 2"

3" BB #15 RP

3.5" BB

4" BB



Purple Catalpa



Catalpa x erubescens
 'Purpurea'

Height: 50' Spread: 50'
 Shape: Dense, spreading
 Flower Color: Yellow and purple
 Foliage: Starts purple, turns to green
 Zones: 5-9

Size

#15 RP



Chicagoland Hackberry

Celtis occidentalis
 'Chicagoland'

Height: 40'-50' Spread: 30'-40'
 Shape: Round
 Foliage: Medium green to yellow-gold in fall
 Zone: 3-7

Sizes

1.75" BB 3" BB

2" BB 3.5" BB

2.5" BB 4" BB

NEW! New Product

N Native to Illinois

Nativar Native Cultivar

Full Sun

Partial Shade

Full Shade

BB Balled & Burlapped

RP Root Pouch



Eastern Redbud



Cercis canadensis

Height: 20'-30' Spread: 25'-35'
 Shape: Rounded outline
 Flower Color: Rosy-pink
 Foliage: Heart shaped, green
 Zones: 4-9

Sizes		
1.5" BB	4' BB Multi-stem	#20 1.5"
1.75" BB	5' BB Multi-stem	#20 1.75"
2" BB	6' BB Multi-stem	#20 2"
2.5" BB	7' BB Multi-stem	#25 4'
3" BB	8' BB Multi-stem	#25 5'
	#15 RP Multi-stem	#25 6'



Forest Pansy Redbud

Cercis canadensis 'Forest Pansy'

Height: 20'-30' Spread: 25'-35'
 Shape: Round
 Flower Color: Rosy-pink, attracts butterflies and hummingbirds
 Foliage: Purple
 Zone: 5-9

Sizes
#20 1.5"
#20 1.75"



American Yellowwood

Cladrastis lutea

Height: 30'-50' Spread: 20'-30'
 Shape: Rounded, upright
 Flower Color: Clusters of white
 Foliage: Dark green
 Zones: 4-8

Sizes	
1.5" BB	#15 RP
1.75" BB	
2" BB	
2.5" BB	



Midnight Express™ Redbud

Cercis canadensis 'RNI-RCC3'

Height: 20'-30' Spread: 10'-20'
 Shape: Rounded
 Flower Color: Pink
 Foliage: Burgundy with green undertones
 Zone: 5-9

Sizes
#20 1.5"
#20 1.75"



Russian Hawthorn

Crataegus ambigua

Height: 18' Spread: 20'
 Flower Color: White clusters
 Foliage: Green, oval
 Zone: 4

Sizes
1.5" BB
1.75" BB
2" BB
2.5" BB



KANKAKEE

• NURSERY CO. •

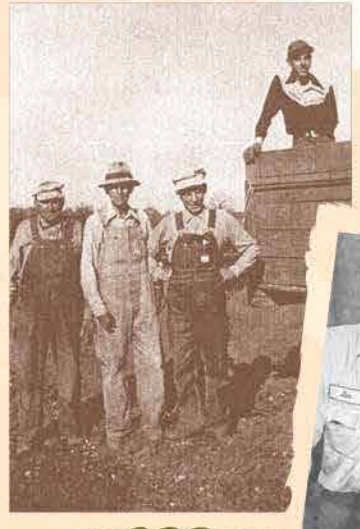
100th Anniversary

Clyde Worth co-founded Kankakee Nursery in 1925, but his sons Phil and Bob turned the nursery into the industry leader it is today. For 100 years, Kankakee Nursery has grown from 20 acres to over 2500 acres, and from a few varieties to a few hundred, with hundreds of thousands of plants in production. What started as two high school buddies trying to support themselves through the Great Depression is now a business that supports the families of 80 employees.

Big, however, is not what we're about. We've grown because we've have great employees and great customers. We try to treat every employee and every customer with respect and appreciation. We believe our relationships with our customers are lasting because we provide them with quality service and plant materials, efficient delivery, understanding of their needs and a commitment to be the best we can be.

Come grow with us!







Thornless Cockspur Hawthorn ●

Crataegus crus-galli 'Inermis'

Height: 15' Spread: 15'
 Shape: Moderately oval
 Flower Color: White
 Foliage: Thornless; red fruit
 Zones: 4-7

Sizes	
1.5" BB	4' BB Multi-stem
1.75" BB	5' BB Multi-stem
2" BB	6' BB Multi-stem
2.5" BB	7' BB Multi-stem



Common Persimmon ● ●

Diospyros virginiana

Height: 35'-60' Spread: 25'-35'
 Shape: Rounded, oval
 Flower Color: Green-white
 Foliage: Dark green; yellow-green in fall
 Zones: 4-9

Size
#15 RP



Washington Hawthorn ● ●

Crataegus phaenopyrum

Height: 25'-30' Spread: 20'-25'
 Shape: Broadly oval to rounded; dense
 Flower Color: White
 Foliage: Glossy green
 Zones: 4-8

Sizes	
1.75" BB Tree form	6' BB Multi-stem
2" BB Tree form	7' BB Multi-stem
2.5" BB Tree form	8' BB Multi-stem
3" BB Tree form	10' BB Multi-stem



Autumn Gold Ginkgo ●

Ginkgo biloba 'Autumn Gold'

Height: 45' Spread: 35'
 Shape: Broadly spreading, symmetrical
 Foliage: light green to yellow in fall
 Zones: 4-8

Sizes
1.5" BB
1.75" BB
2" BB
2.5" BB



Winter King Hawthorn ●

Crataegus viridis 'Winter King'

Height: 30' Spread: 30'
 Shape: Rounded; vase shaped
 Flower Color: White
 Foliage: Dark glossy green; red fruit
 Zones: 4-7

Sizes	
1.5" BB	#20 1.5"
1.75" BB	#20 1.75"
2" BB	#20 2"
2.5" BB	



Princeton Sentry[®] Ginkgo ●

Ginkgo biloba 'Princeton Sentry'

Height: 60' Spread: 25'
 Shape: Upright
 Foliage: Medium green; yellow in fall
 Zones: 4-8

Sizes
1.5" BB
1.75" BB
2" BB
2.5" BB



**Imperial®
Honeylocust** ☉
Gleditsia triacanthos 'Imperial'
Height: 30'-35' Spread: 30'
Shape: Symmetrical right-angle
branches to trunk
Foliage: Green
Zones: 4-7

Sizes	
1.75" BB	3" BB
2" BB	3.5" BB
2.5" BB	



**Sunburst®
Honeylocust** ☉
*Gleditsia triacanthos
'Suncole'*
Height: 30'-45' Spread: 20'-25'
Shape: Broad; pyramidal
Foliage: Yellow
Zones: 4-7

Sizes	
1.75" BB	2.5" BB
2" BB	3" BB



**Shademaster®
Honeylocust** ☉
*Gleditsia triacanthos
'Shademaster®'*
Height: 50'- 60' Spread: 30'- 35'
Shape: Symmetrical
Foliage: Dark green
Zones: 4-7

Sizes	
1.75" BB	3" BB
2" BB	3.5" BB
2.5" BB	



**Kentucky
Coffeetree** ☉
Gymnocladus dioicus
Height: 40'-50' Spread: 20'-25'
Shape: Vertically ascending
branches
Foliage: Green
Zones: 4-8

Sizes	
1.5" BB	3" BB
1.75" BB	3.5" BB
2" BB	#15 RP
2.5" BB	



**Skyline®
Honeylocust** ☉
Gleditsia triacanthos 'Skyline®'
Height: 45' Spread: 35'
Shape: Pyramidal
Foliage: Dark green
Zones: 4-7

Sizes	
1.75" BB	#25 1.5"
2" BB	#25 1.75"
2.5" BB	#25 2"
3" BB	#15 RP



**Espresso™ Kentucky
Coffeetree** ☉
*Gymnocladus dioicus
'Espresso-JFS'*
Height: 50' Spread: 35'
Shape: Oval, upright
Foliage: Medium green
Zones: 4-8

Sizes	
1.5" BB	3.5" BB
1.75" BB	#25 1.5"
2" BB	#25 1.75"
2.5" BB	#25 2"
3" BB	

Trees



Decaf® Kentucky Coffeetree

Gymnocladus dioicus
'McKBranded'

Height: 45'-50' Spread: 40'-50'
Shape: Upright rounded
Foliage: Medium dark green
Flower Color: Green/white
Zones: 3-8

Sizes
1.75" BB
2" BB
2.5" BB
#15 RP



Slender Silhouette Sweetgum

Liquidambar styraciflua
'Slender Silhouette'

Height: 50'-60' Spread: 6'
Shape: Tightly columnar
Foliage: Green with mix of purple, red orange and yellow in fall
Zones: 5-9

Sizes
1.75" BB
2" BB
2.5" BB



Skinny Latte® Kentucky Coffeetree

Gymnocladus dioicus
'Morton'

Height: 50' Spread: 20'
Shape: Upright
Foliage: Green; yellow in fall
Zones: 4-8

Sizes
1.75" BB
2" BB
2.5" BB



Worplesdon American Sweetgum

Liquidambar styraciflua
'Worplesdon'

Height: 40' Spread: 25'
Shape: Pyramidal, upright
Flower Color: Dark green to brilliant orange and purple in the fall
Zones: 5-9

Sizes	
1.75" BB	3" BB
2" BB	3.5" BB
2.5" BB	4" BB



Goldenrain Tree

Koelreuteria paniculata

Height: 20'-30' Spread: 25'-35'
Shape: Upright, vase-shaped
Flower Color: Gold
Foliage: Green, yellow-orange in fall
Zones: 6-9

Sizes
#20 1.5"
#20 1.75"
#20 2"



Tuliptree

Liriodendron tulipifera

Height: 60'-90' Spread: 30'-50'
Shape: Pyramidal to broad
Flower Color: Yellow; tulip-like
Foliage: Bright green
Zones: 4-9

Sizes	
1.5" BB	3" BB
1.75" BB	3.5" BB
2" BB	#15 RP
2.5" BB	



NEW! New Product

N Native to Illinois

Nativar Native Cultivar

☉ Full Sun

☾ Partial Shade

● Full Shade

BB Balled & Burlapped

RP Root Pouch



White Shield Osage Orange

Maclura pomifera 'White Shield'

Height: 30'-35' Spread: 30'-35'
 Shape: Upright spreading
 Foliage: Glossy, dark green to yellow in fall
 Zones: 4-9

Sizes

1.75" BB

2" BB

2.5" BB

3" BB



Sweetbay Magnolia

Magnolia virginiana

Height: 10'-20' Spread: 10'-20'
 Shape: Irregular, upright
 Flower Color: White/cream
 Foliage: Bright green
 Zones: 5-9

Size

#15 RP Multistem



Jane Magnolia

Magnolia 'Jane'

Height: 10'-15' Spread: 10'
 Shape: Shrubby
 Flower Color: Purple-red opening to white
 Foliage: Medium green
 Zones: 4-7

Sizes

#15 RP Multistem



Adams Crabapple

Malus 'Adams'

Height: 20' Spread: 20'
 Shape: Rounded; dense
 Flower Color: Pink
 Foliage: Green with reddish tint; red fruit
 Zones: 4-7

Sizes

1.5" BB

1.75" BB

2" BB

2.5" BB

3" BB



Royal Star Magnolia

Magnolia stellata 'Royal Star'

Height: 15'-20' Spread: 15'-20'
 Shape: Upright branching
 Flower Color: White
 Zones: 4-8

Sizes

#15 RP Multistem



Adirondack Crabapple

Malus 'Adirondack'

Height: 15'-18' Spread: 6'-8'
 Shape: Densely upright
 Flower Color: White
 Foliage: Medium green
 Zones: 4-8

Sizes

1.5" BB

1.75" BB

2" BB

2.5" BB



Coralburst Crabapple

Malus 'Coralcole'
 Height: 15' Spread: 15'
 Shape: Compact; dense; rounded
 Flower Color: Rose pink
 Foliage: Dark green; fruit is bronze
 Zones: 3-7

Sizes

#15 RP Top-graft



Red Jewel® Crabapple

Malus 'Jewelcole'
 Height: 15' Spread: 12'
 Shape: Moderate vase
 Flower Color: White
 Foliage: Red fruit
 Zones: 4-7

Sizes

1.5" BB	#20 1.5"
1.75" BB	#20 1.75"
2" BB	#20 2"
2.5" BB	
3" BB	



Donald Wyman Crabapple

Malus 'Donald Wyman'
 Height: 20' Spread: 20'
 Shape: Large spreading
 Flower Color: White
 Foliage: Dark green; red fruit
 Zones: 4-7

Sizes

1.5" BB
 1.75" BB
 2" BB
 2.5" BB
 3" BB



Raspberry Spear® Crabapple

Malus 'JFS KW213MX'
 Height: 20' Spread: 8'
 Shape: Columnar, upright
 Flower: Magenta
 Foliage: Green-purple; bronze-orange in fall
 Zones: 4-9

Sizes

#20 1.5"
 #20 1.75"
 #20 2"



Gladiator™ Crabapple

Malus 'Durleo'
 PP 20,167
 Height: 15'-20' Spread: 8'-10'
 Shape: Columnar, narrow
 Flower Color: Pink, fragrant
 Foliage: Bronze purple
 Fruit: Purple
 Zones: 2-8

Sizes

1.5" BB	#20 1.5"
1.75" BB	#20 1.75"
2" BB	#20 2"
2.5" BB	



Ivory Spear® Crabapple

Malus 'JFS KW214MX'
 PP 31076
 Height: 18' Spread: 7'
 Shape: Tightly columnar
 Flower Color: White
 Foliage: Dark green, clean and disease-free
 Zones: 4-9

Sizes

#20 1.5"
 #20 1.75"
 #20 2"



Royal Raindrops® Crabapple

Malus 'JFS-KW5'

PP 14,375
Height: 20' Spread: 15'
Shape: Upright spreading
Flower Color: Pink
Foliage: Deep purple
Zones: 4-7

Sizes	
1.5" BB	#20 1.5"
1.75" BB	#20 1.75"
2" BB	#20 2"
2.5" BB	#25 4' clump
	#25 5' dump



Prairiefire Crabapple

Malus 'Prairiefire'

Height: 20' Spread: 15'
Shape: Rounded
Flower Color: Dark pink
Foliage: Red maroon; red fruit
Zones: 4-7

Sizes	
1.5" BB	#20 1.5"
1.75" BB	#20 1.75"
2" BB	#20 2"
2.5" BB	



Lollipop® Crabapple

Malus 'Lollizam'

Height: 8' Spread: 8'
Shape: Compact; dwarf; rounded
Flower Color: White
Foliage: Dark green
Zones: 4-8

Size
#15 RP Top-graft



Purple Prince Crabapple

Malus 'Purple Prince'

Height: 20' Spread: 20'
Shape: Rounded
Flower Color: Rose-red
Foliage: Purple bronze turns bronze green; maroon fruit
Zones: 4-7

Sizes	
1.75" BB	3" BB
2" BB	3.5" BB
2.5" BB	



Perfect Purple Crabapple

Malus 'Perfect Purple'

Height: 18'-20' Spread: 18'-20'
Shape: Rounded
Flower Color: Deep-pink
Foliage: Deep purple
Fruit: Purple/red
Zones: 4-8

Sizes
1.5" BB
1.75" BB
2" BB
2.5" BB



Red Barron Crabapple

Malus 'Red Barron'

PP 8056
Height: 15'-18' Spread: 6'-8'
Shape: Narrow, columnar
Foliage: Reddish-purple
Flower Color: dark red
Fruit: Dark red
Zones: 4-8

Sizes
1.75" BB
2" BB
2.5" BB
3" BB

Trees



Red Jade Crabapple

Malus 'Red Jade'

Height: 15' Spread: 15'
 Shape: Weeping
 Flower Color: White
 Foliage: Glossy fruit attracts birds
 Zones: 4-7

Sizes

1.75" BB

2" BB

2.5" BB



Spring Snow Crabapple

Malus 'Spring Snow'

Height: 25' Spread: 15'
 Shape: Dense; upright; oval
 Flower Color: White
 Foliage: Medium green
 Zones: 3-7

Sizes

1.5" BB

3" BB

1.75" BB

#20 1.5"

2" BB

#20 1.75"

2.5" BB

#20 2"



Sargent Tina Crabapple

Malus sargentii 'Tina'

Height: 5' Spread: 6'
 Shape: Round, dwarf
 Flower Color: White
 Foliage: Red fruit
 Zones: 4-7

15 RP Top-graft



Sugar Tyme[®] Crabapple

Malus 'Sutyzam'

Height: 15'-18' Spread: 12'-15'
 Shape: Upright
 Flower Color: Pink
 Foliage: Green
 Zones: 4-8

Sizes

1.75" BB

2" BB

2.5" BB

3" BB



Prairie Rose Crabapple

Malus ioensis 'Prairie Rose'

Height: 15'-20' Spread: 10'-15'
 Shape: Irregular, spreading
 Flower: Light pink
 Foliage: Green, yellow in fall
 Zones: 3-8


Sizes

1.5" BB

1.75" BB

2" BB

 New Product

 Native to Illinois

 Native Cultivar

 Full Sun

 Partial Shade

 Full Shade

 Balled & Burlapped

 Root Pouch



Starlite[®] Crabapple

Malus x 'Jeflita'
Height: 20'-25' Spread: 15' -20'
Shape: Upright, rounded
Flower Color: White
Foliage: Medium green
Zones: 2-7

Sizes	
#20	1.5"
#20	1.75"
#20	2"



Green Gable[™] Black Gum

Nyssa sylvatica 'NSUHH'
Height: 50' Spread: 20'
Shape: Upright, densely pyramidal
Foliage: Dark green, bright red in fall
Zones: 4-9

Sizes	
#20	1.5"
#20	1.75"



Dawn Redwood

Metasequoia glyptostroboides
Height: 70'-100' Spread: 15'-25'
Shape: Conical
Foliage: Deep green to red-bronze
in fall
Zones: 4-8

Sizes	
1.75" BB	3" BB
2" BB	3.5" BB
2.5" BB	4" BB



Ironwood

Ostrya virginiana
Height: 30'-50' Spread: 15'-25'
Shape: Pyramidal round
Foliage: Green; yellow in fall
Zones: 4-9

Sizes	
1.5" BB	
1.75" BB	
2" BB	
2.5" BB	
#15 RP	



Black Gum

Nyssa sylvatica
Height: 30'-50' Spread: 20'-30'
Shape: Rounded crown
Foliage: Dark-green; orange and
scarlet in fall
Zones: 3-9

Size	
#15 RP	



Exclamation![™] London Planetree

Platanus x acerifolia 'Morton Circle'
Height: 60' Spread: 30'
Shape: Uniform upright
Foliage: Rich green
Zones: 4-8

Sizes	
1.75" BB	4" BB
2" BB	#25 1.5"
2.5" BB	#25 1.75"
3" BB	#25 2"
3.5" BB	#15 RP



Quaking Aspen ●

Populus tremuloides
 Height: 60'-80' Spread: 30'
 Shape: Rounded
 Foliage: Yellow in fall
 Zones: 2-7

Sizes

- #25 1.5" RP
- #25 1.75" RP
- #25 2" RP



Sucker Punch® Chokecherry ●

Prunus virginiana 'Sucker Punch'
 PP25,767
 Height: 20'-30' Spread: 18'-20'
 Shape: Rounded
 Flower Color: White
 Foliage: Deep purple
 Zones: 3-8

Sizes

- 1.75" BB
- 2" BB
- 2.5" BB



Newport Plum ●

Prunus cerasifera 'Newport'
 Height: 20' Spread: 20'
 Shape: Rounded
 Flower Color: Pink
 Foliage: Deep purple
 Zones: 4-8

Sizes

1.5" BB	2.5" BB
1.75" BB	3" BB
2" BB	



Pink Snow Showers™ Weeping Cherry ●

Prunus x 'Pisnshzam'
 Height: 25' Spread: 20'-25'
 Shape: Weeping branches
 Flower Color: Pink
 Foliage: Glossy green; fall - golden
 Zones: 4-8

Sizes

- #20 1.5"
- #20 1.75"
- #20 2"



Canada Red Chokecherry ●

Prunus virginiana 'Canada Red'
 Height: 25' Spread: 20'
 Shape: Broad pyramidal
 Flower Color: White
 Foliage: Dense green; turns purple in late spring; purple fruit
 Zones: 2-6

Sizes

- 1.75" BB
- 2" BB
- 2.5" BB
- 3" BB



Wafer-Ash/ Common Hop Tree ● ●

Ptelea trifoliata
 PP 19,564
 Height: 20'-25' Spread: 5'-6'
 Shape: Columnar
 Flower Color: White
 Foliage: Dark purple
 Zones: 4-9

Sizes

- #15 RP



White Oak ●

Quercus alba

Height: 50'-80' Spread: 50'-80'
 Shape: Young pyramidal; maturing to spreading crown
 Foliage: Red in fall
 Zones: 3-9

Sizes	
1.5" BB	
1.75" BB	
2" BB	
2.5" BB	
#15 RP	



Northern Pin Oak ●

Quercus ellipsoidalis

Height: 55' Spread: 40'
 Shape: Broad pyramidal to oval
 Foliage: Green; red in fall
 Zones: 4-7

Sizes	
1.5" BB	2.5" BB
1.75" BB	3" BB
2" BB	#15 RP



Swamp White Oak ●

Quercus bicolor

Height: 45' Spread: 45'
 Shape: Broad; open crown
 Foliage: Dark shiny green
 Zones: 4-8

Sizes	
1.5" BB	#25 1.5"
1.75" BB	#25 1.75"
2" BB	#25 2"
2.5" BB	#15 RP
3" BB	
3.5" BB	



Shingle Oak ●

Quercus imbricaria

Height: 50'-60' Spread: 40'
 Shape: Broad; oval
 Foliage: Long, dark green lobed
 Zones: 4-8

Sizes	
1.5" BB	3" BB
1.75" BB	3.5" BB
2" BB	#15 RP
2.5" BB	



Scarlet Oak ●

Quercus coccinea

Height: 70'-75' Spread: 40'-50'
 Foliage: Scarlet in fall
 Shape: Rounded; open at maturity
 Zones: 4-7

Sizes
1.5" BB
1.75" BB
2" BB
2.5" BB
3" BB



NEW! New Product

N Native to Illinois

Nativar Native Cultivar

● Full Sun

● Partial Shade

● Full Shade

BB Balled & Burlapped

RP Root Pouch

Trees



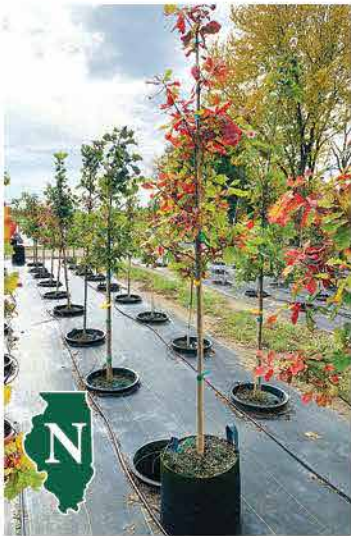
Bur Oak ☉
Quercus macrocarpa
 Height: 70'-80' Spread: 70'-80'
 Shape: Broad-spreading
 Foliage: Dark green
 Zones: 3-8

Sizes	
1.5" BB	#25 RP 1.5"
1.75" BB	#25 RP 1.75"
2" BB	#25 RP 2"
2.5" BB	#15 RP
3" BB	
3.5" BB	
4" BB	



Northern Red Oak ☉
Quercus rubra
 Height: 60'-75' Spread: 60'-75'
 Shape: Round top; symmetrical
 Foliage: Dark green; red in fall
 Zones: 4-8

Sizes	
1.75" BB	#25 RP 1.5"
2" BB	#25 RP 1.75"
2.5" BB	#25 RP 2"
3" BB	
3.5" BB	
4" BB	



Swamp Chestnut Oak ☉☾
Quercus michauxii
 Height: 80' Spread: 60'
 Shape: Broad spreading
 Foliage: Green; red in fall
 Zones: 5-9

#15 RP



Shumard Oak ☉
Quercus shumardii
 Height: 40'-60' Spread: 30'-40'
 Foliage: Shiny dark green
 Zones: 5-9

Sizes	
1.75" BB	
2" BB	
2.5" BB	
3" BB	
#15 RP	



Chinkapin Oak ☉
Quercus muehlenbergii
 Height: 40'-50' Spread: 50'
 Shape: Open; round
 Foliage: Dark green
 Zones: 5-7

Sizes	
1.5" BB	3" BB
1.75" BB	#15 RP
2" BB	
2.5" BB	



Heritage® Oak ☉
Quercus x macdanielii
 'Clemons'
 Height: 50'-60' Spread: 35'-40'
 Shape: Pyramidal, rounded
 Foliage: Dark green
 Zones: 4-8

Sizes	
1.5" BB	#25 RP 1.5"
1.75" BB	#25 RP 1.75"
2" BB	#25 RP 2"
2.5" BB	
3" BB	

NEW! New Product

N Native to Illinois

Nativar Native Cultivar

☉ Full Sun

☾ Partial Shade

● Full Shade

BB Balled & Burlapped

RP Root Pouch



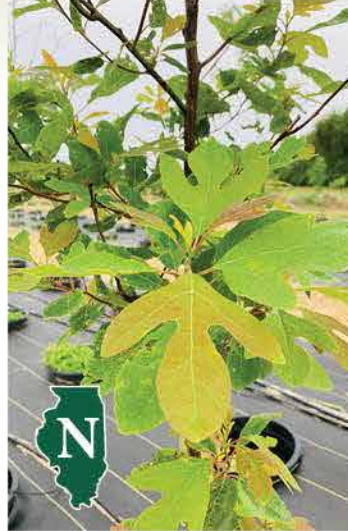
Regal Prince® Oak



Quercus x warei 'Long'

Height: 40'-60' Spread: 20'-25'
 Shape: Upright; columnar
 Foliage: Glossy green
 Zones: 4-9

Sizes	
1.75" BB	#25 RP 1.5"
2" BB	#25 RP 1.75"
2.5" BB	#25 RP 2"
3" BB	#15 RP



Common

Sassafras

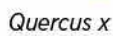
Sassafras albidum

Height: 30'-60' Spread: 25'-40'
 Shape: Pyramidal
 Flower: Yellow-green
 Foliage: Green; yellow-red in fall
 Zones: 4-9

Size
#15 RP



Kindred Spirit® Oak



Quercus x warei 'Nadler'

Height: 30' Spread: 6'
 Shape: Tightly columnar
 Foliage: Medium green
 Zones: 4

Sizes	
1.75" BB	#25 RP 1.5"
2" BB	#25 RP 1.75"
2.5" BB	#15 RP



Ivory Silk® Japanese Tree Lilac

Syringa reticulata 'Ivory Silk'

Height: 20' Spread: 15'
 Shape: Compact
 Flower Color: Cream white
 Foliage: Dark green
 Zones: 3-8

Sizes	
1.5" BB	#20 1.5"
1.75" BB	#20 1.75"
2" BB	#20 2"
2.5" BB	
3" BB	



Niobe Weeping Willow

Salix alba 'Tristis'

Height: 50' Spread: 50'
 Shape: Broadly domed; weeping
 Foliage: Golden yellow
 Zones: 4-8

Size
#15 RP

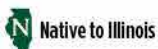


Japanese Tree Lilac

Syringa reticulata

Height: 20'-30' Spread: 15'-25'
 Shape: Oval to round crown
 Flower Color: Cream white
 Foliage: Sharply tipped; green
 Zones: 3-7

Sizes	
4' BB Multi-stem	7' BB Multi-stem
5' BB Multi-stem	8' BB Multi-stem
6' BB Multi-stem	





**Snowdance™
Japanese Tree
Lilac** ☉

Syringa reticulata 'Bailnce'
PP 20,458
Height: 10'-20' Spread: 10'-20'
Shape: Rounded
Flower Color: White
Foliage: Dark green
Zones: 3-7

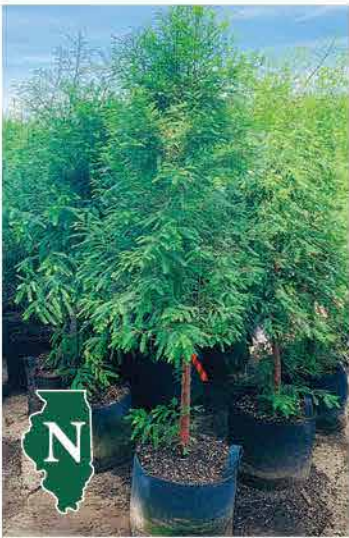
Sizes	
1.5" BB	2" BB
1.75" BB	2.5" BB



**American Sentry®
Linden** ☉

Tilia americana 'McKSentry'
Height: 40'-45' Spread: 25'-30'
Shape: Upright; narrow
Foliage: Dark Green; deep yellow in fall
Zones: 3-8

Sizes	
1.5" BB	2.5" BB
1.75" BB	3" BB
2" BB	#15 RP



**Common Bald
Cypress** ☉

Taxodium distichum
Height: 50'-70' Spread: 20'-40'
Shape: Pyramidal
Foliage: Green needles; or-ange-bronze in fall
Zones: 4-9

Sizes	
1.75" BB	3.5" BB
2" BB	4" BB
2.5" BB	#15 RP
3" BB	



**Greenspire™
Littleleaf Linden**

☉ ☐
Tilia cordata 'PNI 6025'
P.P. 2,086
Height: 40' Spread: 30'
Shape: Pyramidal; dense
Foliage: Shiny dark green
Zones: 4-7

Sizes	
1.5" BB	2.5" BB
1.75" BB	3" BB
2" BB	3.5" BB



**Shawnee Brave™
Bald Cypress** ☉

Taxodium distichum 'Michelson'
Height: 50'-70' Spread: 15'-20'
Shape: Narrow pyramidal
Foliage: Green needles; or-ange-bronze in fall
Zones: 4-9

Sizes		
1.75" BB	3" BB	#25 RP 1.5"
2" BB	3.5" BB	#25 RP 1.75"
2.5" BB	4" BB	#25 RP 2"



Silver Linden ☉

Tilia tomentosa
Height: 50'-70' Spread: 25'-50'
Shape: Upright; oval
Foliage: Dark green
Zones: 4-7

Sizes
1.75" BB
2" BB
2.5" BB
3" BB



Sterling Silver Linden

Tilia tomentosa 'Sterling'

Height: 45' Spread: 30'
 Shape: Broadly oval
 Foliage: Dark green, silver undersides, gold in fall
 Zones: 5-9

Sizes	
1.75" BB	
2" BB	
2.5" BB	
3" BB	



Centennial™ Linden

Tilia 'zamoyskiana'

Height: 70' Spread: 30'
 Shape: Pyramidal
 Flower Color: Creamy yellow, fragrant
 Foliage: Deep green, heart shaped
 Zones: 4-8

Sizes	
#15 RP	



Redmond Linden

Tilia x euchlora 'Redmond'

Height: 50'-70' Spread: 35'-45'
 Shape: Pyramidal; dense
 Foliage: Dark green
 Zones: 4-8

Sizes	
1.75" BB	2.5" BB
2" BB	3" BB



Jefferson American Elm

Ulmus americana 'Jefferson'

Height: 40'-50' Spread: 40'-50'
 Shape: Vase-shaped, broad-rounded
 Foliage: Dark green
 Zones: 4-9

Sizes	
1.5" BB	3" BB
1.75" BB	3.5" BB
2" BB	4" BB
2.5" BB	



Glenleven Linden

Tilia x flavescens 'Glenleven'

Height: 50' Spread: 35'
 Shape: Pyramidal to oval
 Foliage: Green
 Zones: 4-7

Sizes	
1.75" BB	3" BB
2" BB	3.5" BB
2.5" BB	



New Harmony Elm

Ulmus americana 'New Harmony'

Height: 70' Spread: 65'
 Shape: Vase; arching limbs
 Foliage: Medium green
 Zones: 4-8

Sizes	
1.5" BB	3" BB
1.75" BB	3.5" BB
2" BB	4" BB
2.5" BB	



Princeton American Elm ☉
Ulmus americana 'Princeton'
 Height: 65' Spread: 50'
 Shape: Upright; vase
 Foliage: Dark Green; yellow in fall
 Zones: 4-9

Sizes	
1.5" BB	4" BB
1.75" BB	#15 RP
2" BB	#25 1.5"
2.5" BB	#25 1.75"
3" BB	#25 2"
3.5" BB	



Accolade™ Elm ☉
Ulmus japonica x wilsoniana 'Morton'
 Height: 70' Spread: 40'-50'
 Shape: Upright; spreading
 Foliage: Deep green
 Zones: 4-7

Sizes	
1.5" BB	3" BB
1.75" BB	3.5" BB
2" BB	4" BB
2.5" BB	



New Horizon Elm ☉
Ulmus japonica x pumila 'New Horizon'
 PP 8,684
 Height: 40' Spread: 25'
 Shape: Compact; upright; oval
 Foliage: Deep green; slightly rusty red in fall
 Zones: 4-7

Sizes	
1.75" BB	3.5" BB
2" BB	4" BB
2.5" BB	#15 RP
3" BB	



Frontier Elm ☉
Ulmus minor x parvifolia 'Frontier'
 Height: 25'-40' Spread: 15'
 Shape: Upright; pyramidal
 Foliage: Green; sharp red-purple in fall
 Zones: 4-10

Sizes	
1.5" BB	3.5" BB
1.75" BB	4" BB
2" BB	#25 1.5"
2.5" BB	#25 1.75"
3" BB	#25 2"





Triumph™ Elm ☉

Ulmus 'Morton Glossy'

Height: 55' Spread: 45'
 Shape: Upright; oval to vase
 Foliage: Dark Green; yellow in fall
 Zones: 5-7

Sizes	
1.5" BB	4" BB
1.75" BB	#25 1.5"
2" BB	#25 1.75"
2.5" BB	#25 2"
3" BB	#15 RP
3.5" BB	



Prospector Elm ☉☾

Ulmus wilsoniana 'Prospector'

Height: 40'-50' Spread: 20'-25'
 Shape: Vase-shaped
 Foliage: Emerges orange-red, maturing to green
 Zones: 4-10

Sizes	
1.5" BB	3" BB
1.75" BB	3.5" BB
2" BB	4" BB
2.5" BB	



Musashino Japanese Zelkova ☉

Zelkova serrata 'Musashino'

Height: 45' Spread: 15'
 Shape: Tightly columnar
 Flower Color: White
 Foliage: Fine textured; rusty-red fall color
 Zones: 5-9

Sizes	
1.75" BB	3" BB
2" BB	3.5" BB
2.5" BB	4" BB

Visit our website to browse our plant library, see pricing and availability, and place an online order!

kankakeenursery.com



NEW! New Product

N Native to Illinois

Nativar Native Cultivar

☉ Full Sun

☾ Partial Shade

● Full Shade

BB Balled & Burlapped

RP Root Pouch

Shrubs



Cornelian Cherry Dogwood

Cornus mas

Height: 25' Spread: 15'
 Shape: Oval to rounded
 Flower Color: Yellow
 Foliage: Glossy; dark green; red cherry fruit
 Zones: 4-8

Sizes

3' BB

4' BB

5' BB

6' BB



Vernal Witch Hazel

Hamamelis x intermedia

Height: 10' Spread: 10'
 Shape: Neat; small; dense
 Flower Color: Yellow to red
 Foliage: Yellow in fall
 Zones: 5-8

Sizes

3' BB

4' BB

5' BB

6' BB



Royal Purple Smokebush

Cotinus coggygria 'Royal Purple'

Height: 15' Spread: 10'-12'
 Shape: Upright; loose spreading
 Flower Color: Purple
 Foliage: Red-purple; scarlet in fall
 Zones: 5-8

Size

#15 RP



Quick Fire[®] Hydrangea Tree

●●●

Hydrangea paniculata 'Bulk'

USPP 16,812; CAN 3,398
 Height: 6'-8' Spread: 6'-8'
 Shape: Upright
 Flower Color: Deep pink; early
 Foliage: Medium green
 Zones: 4-8

Size

#10 Tree form



Common Witch Hazel

Hamamelis virginiana

Height: 15' Spread: 12'-15'
 Shape: Irregular crown; crooked branches
 Flower Color: Yellow in fall
 Foliage: Fall yellow
 Zones: 4-8

Sizes

3' BB

4' BB

5' BB

6' BB



Limelight Hydrangea Tree

●●●

Hydrangea paniculata 'Limelight'

USPP 12,874; CAN 2,319
 Height: 6'-8' Spread: 5'-7'
 Shape: Upright; slightly compact
 Flower Color: Lime-green turning pink
 Foliage: Medium green
 Zones: 3-8

Size

#10 Tree form

NEW! New Product

N Native to Illinois

Nativar Native Cultivar

● Full Sun

● Partial Shade

● Full Shade

BB Balled & Burlapped

RP Root Pouch



Little Lime® Hydrangea Tree



Hydrangea paniculata 'Jane'

Height: 3'-6' Spread: 3'-5'
Shape: Upright
Flower Color: Lime-green turning pink and hot pink
Foliage: Medium green
Zones: 3-8

Size

#10 Tree form



Dwarf Korean Lilac



Syringa meyeri 'Palibin'

Height: 4'-5' Spread: 5'-7'
Shape: Compact; rounded
Flower Color: Violet-purple
Foliage: Glossy
Zones: 3-7

Size

#10 Tree form



Berry White™ Hydrangea



Hydrangea paniculata 'Renba'

Height: 6'-7' Spread: 4'-5'
Shape: Upright
Flower Color: Two-toned white and hot pink
Foliage: Green
Zones: 3-8

Sizes

#10 Tree form



Blackhaw Viburnum



Viburnum prunifolium

Height: 12'-15' Spread: 8'-12'
Shape: Round-headed
Flower Color: Cream white
Foliage: Dark green; red and purple in fall
Zones: 5-8

Sizes

3' BB #25 4'

4' BB #25 5'

5' BB

6' BB



Vanilla Strawberry™ Hydrangea Tree



Hydrangea paniculata 'Renhy'

PP 20,670
Height: 6'-7' Spread: 4'-5'
Shape: Upright
Flower Color: White turning dark pink
Foliage: Dark green
Zones: 4-8

Size

#10 Tree form



Evergreens



Green Velvet

Boxwood ● ● ●

Buxus 'Green Velvet'

Height: 3'-4' Spread: 3'-4'
 Shape: Rounded
 Foliage: Bright green
 Zones: 4-9

Sizes

- 15" BB
- 18" BB
- 21" BB
- 2' BB



Spartan Juniper ●

Juniperus chinensis 'Spartan'

Height: 15' Spread: 3'-5'
 Shape: Upright, narrow
 Foliage: Bright green
 Zones: 4-9

Sizes

- 5' BB
- 6' BB
- 7' BB



Blue Point Juniper ●

Juniperus chinensis 'Blue Point'

Height: 12'-14' Spread: 8'-10'
 Shape: Pyramidal/columnar
 Foliage: Blueish/green
 Zones: 4-9

Sizes

- 4' BB
- 5' BB
- 6' BB
- 7' BB



Hetzii Columnar Juniper ●

Juniperus chinensis 'Hetzii Columnaris'

Height: 12'-15' Spread: 4'-6'
 Shape: Symmetrical, conical-pyramidal
 Foliage: Bright green
 Zones: 3-9

Sizes

- 5' BB
- 6' BB
- 7' BB
- 8' BB

NEW! New Product

N Native to Illinois

Nativar Native Cultivar

● Full Sun

● Partial Shade

● Full Shade

BB Balled & Burlapped

RP Root Pouch

Evergreens



Star Power™ Juniper

Juniperus x 'J.N. Select Blue'

Height: 17' Spread: 7'-9'
Shape: Upright
Foliage: Blue green
Zones: 3-9

Sizes
5' BB
6' BB
7' BB
8' BB



Taylor Juniper

Juniperus virginiana 'Taylor'

Height: 15'-20' Spread: 3'-4'
Shape: Narrow columnar
Foliage: Rich blue-green
Zones: 3-8

Size
#15 RP



Eastern Red Cedar

Juniperus virginiana

Height: 40'-50' Spread: 8'-20'
Shape: Upright, pyramidal
Foliage: Blue-Green, berry-like
cones
Zones: 3-9

Sizes
5' BB
6' BB
7' BB



Norway Spruce

Picea abies

Height: 40'-60' Spread: 25'-30'
Shape: Pyramidal when young
Foliage: Bright green when young,
changing to dark green at maturity
Zones: 2-7

Sizes	
4' BB	7' BB
5' BB	8' BB
6' BB	



Hillspire Juniper

Juniperus virginiana 'Hillspire'

Height: 12'-15' Spread: 4'-6'
Shape: Narrow pyramidal
Foliage: Bright green, silvery
berry-type cones
Zones: 4-7

Sizes
5' BB
6' BB
7' BB
8' BB



Black Hills Spruce

Picea glauca var. Densata

Height: 40'-60' Spread: 15'-25'
Shape: Dense, pyramidal
Foliage: Pendulous cylindrical cones
on grayish blue-green branches
Zones: 3-6

Sizes
4' BB
5' BB

NEW! New Product

N Native to Illinois

Nativar Native Cultivar

☀ Full Sun

☀/☾ Partial Shade

☾ Full Shade

BB Balled & Burlapped

RP Root Pouch

SALES & SERVICE CALL 1.800.344.7697

Evergreens



Eastern White Pine

Pinus strobus
 Height: 50'-80' Spread: 20'-40'
 Shape: Loose pyramidal when young, grows irregular with age
 Foliage: Bluish-green; soft
 Zones: 3-8

Sizes
5' BB
6' BB
7' BB
8' BB



Nigra Arborvitae

Thuja occidentalis 'Nigra'
 Height: 20'-30' Spread: 4'-5'
 Shape: Dense pyramidal
 Foliage: Dark green
 Zones: 3-7

Sizes
4' BB
5' BB
6' BB
7' BB



Technito[®]
Arborvitae
Thuja occidentalis 'Bailjohn'
 PP 15,850
 Height: 8'-10' Spread: 4'-5'
 Foliage: Dark green
 Zones: 3-7



Sizes
3' BB
4' BB
5' BB



Pyramidal Arborvitae

Thuja occidentalis 'Pyramidalis'
 Height: 20'-30' Spread: 6'
 Shape: Narrow pyramidal
 Foliage: Soft bright green
 Zones: 3-8

Sizes
5' BB
6' BB
7' BB
8' BB



Brabant
Arborvitae
Thuja occidentalis 'Brabant'
 Height: 15'-20' Spread: 6'-8'
 Foliage: Green
 Zones: 3-7

Sizes
4' BB
5' BB
6' BB
7' BB



Emerald
Arborvitae
Thuja occidentalis 'Smaragd'
 Height: 15' Spread: 3'-4'
 Shape: Narrow pyramidal
 Foliage: Dense emerald green
 Zones: 5-8

Sizes
4' BB
5' BB
6' BB
#15 RP



Evergreens



Techny Arborvitae



Thuja occidentalis 'Mission'

Height: 20'-30' Spread: 6'-8'

Shape: Broad pyramidal

Foliage: Dark green

Zones: 3-8

Sizes
4' BB
5' BB
6' BB



Green Giant

Arborvitae

Thuja plicata 'Green Giant'

Height: 40'-60' Spread: 12'-20'

Foliage: Dense, rich green

Zones: 5-7

Sizes	
5' BB	8' BB
6' BB	10' BB
7' BB	#15 RP

Kankakee Nursery continues to strive to be the Midwest's leading producer of premium-grade, homegrown arborvitae!



NEW! New Product

N Native to Illinois

Nativar Native Cultivar

Full Sun

Partial Shade

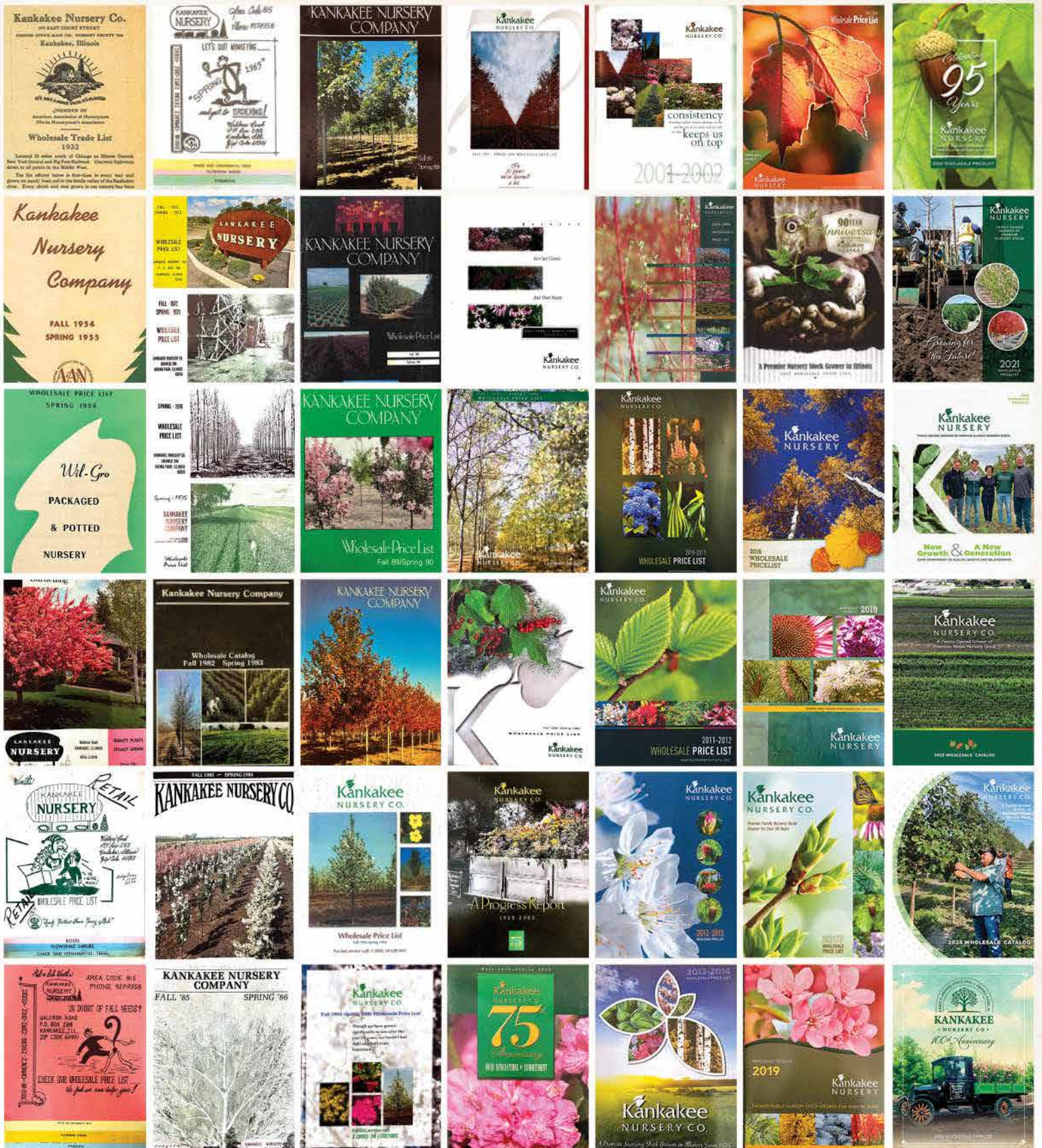
Full Shade

BB Balled & Burlapped

RP Root Pouch

SALES & SERVICE CALL 1.800.344.7697

Celebrating 100 years of success!





KANKAKEE

• NURSERY CO •

P.O. Box 288
Aroma Park, IL 60910

Visit our website to browse
our plant library, see
pricing and availability,
and place an online order!
kankakeenursery.com

Plus, follow us on social media
for current news and events!



CONTACT US:

Weekdays 8am to 4pm CST

No trucks will be loaded from
noon to 12:30pm or after 3pm.

For up-to-date pricing and
inventory availability, please
call, email or check our website
at kankakeenursery.com

 sales@kankakeenursery.com

 800.344.7697

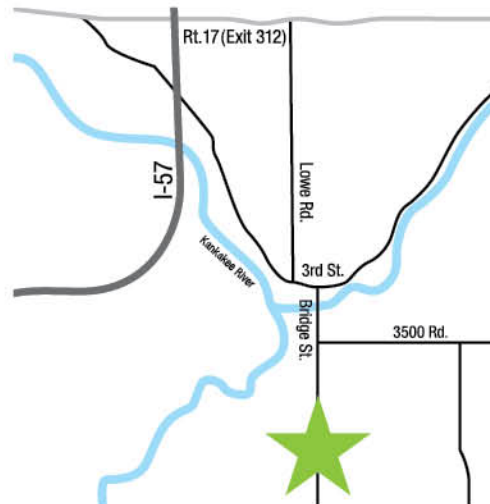
 Fax: 1.815.937.9389

 kankakeenursery.com

PRSR STD
US POSTAGE

PAID

Aroma Park, IL 60910
Permit No. 10



Directions to Kankakee Nursery

4481 S 3250E Rd, Saint Anne, IL 60964

Kankakee Nursery is conveniently located near Interstate 57 south of Kankakee.

1. Take I-57, Exit 312, Route 17 east and travel one mile to Lowe Road.
2. Turn south (right) on Lowe Road and go three miles to Third Street (stop sign) in Aroma Park.
3. Turn east (left) on Third and travel three blocks to a four-way stop at Bridge St.
4. Take Bridge Street south (right) over the Kankakee River and travel one and one-half miles to Kankakee Nursery.